

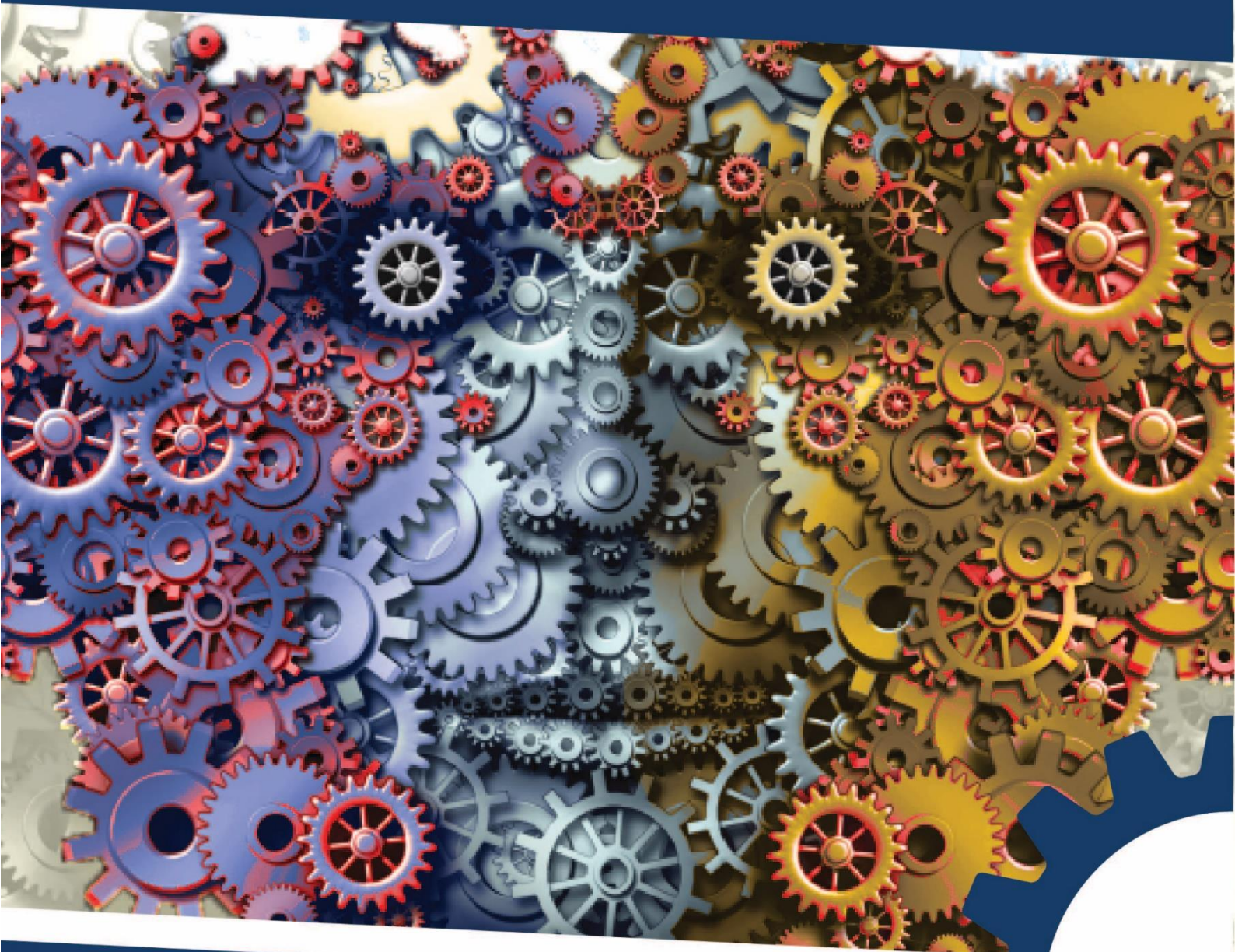
0843 289 2624
www.spierssafety.co.uk



CE Marking Machines | POWER Inspections | Training

CE Marking for Industrial Machinery Training

Level 2



Share if you like it



CE Marking for Industrial Machinery training

Level 2

Introduction

The Machinery Directive 2006/42/EC is implemented by the Supply of Machinery Regulations 2008.

This puts a duty on the **responsible persons** to follow a conformity assessment procedure. The **responsible person** will be the manufacturer of the machinery or partly completed machinery.

- 1) The manufacturer is a person who designs or manufactures machinery or partly completed machinery:
 - a. With a view to its being placed on the market under that person's own name or trademark; or
 - b. For that person's own use in an EEA state; or
- 2) If there is no such person, the person who places that machinery or partly completed machinery on the market or puts it into service;

The CE Marking of Industrial Machines Level 2 is an appropriate means to support competency in the conformity assessment of industrial machines. The arrangements put in place for this purpose are the conformity assessment management systems and these are an essential aspect of achieving and maintaining conformity with community requirements (CE marking).

What is entailed?

The learner will attend 2 days learning and assessment to establish understanding and skill in the conformity assessment procedure for CE marking industrial machines. It is also advised to do 1 days' worth of preparation before attending (which will be defined once you have booked a seat).

It will address well-defined scenarios and enhance ability to address them by structured methods. You have the option to attend a one day machine safety workshop to support your preparation for the course.



What are the learning outcomes?

1. Understand and apply appropriate technical terms and definitions in accordance with the Machinery Directive 2006/ EC.
2. Understand how to establish a design risk assessment (DRA) procedure.
3. Identify the correct EN standards for industry best practice.
4. Demonstrate and evidence compliance against the Essential Health and Safety Requirements (EHSRs) and common EN standards as a presumption of conformity.



Who is it aimed at?

Our CE Marking courses are recommended for **designers, integrators, modifiers** and those involved in pre-purchase auditing of machines. It is particularly important for those responsible for **managing the conformity assessment process** and **moderating** or **guiding** others.



What are the benefits?

Your knowledge of the conformity assessment procedure will allow you adapt to different scenarios to ensure it continues to correctly document your machine's compliance with the machinery directive.

In addition, you will recognise common non-compliances for more complex scenarios and have a good level of knowledge regards the supporting standards.



When are where?

The CE Marking of Industrial Machines Level 2 can be delivered at:

- Spiers Training Centre in Tamworth, Staffs.
- Your site (min. 4 seats per booking)

Please check the detail provided in your proposal costings for the location chosen. If you would like to change or update you proposal please let us know.