

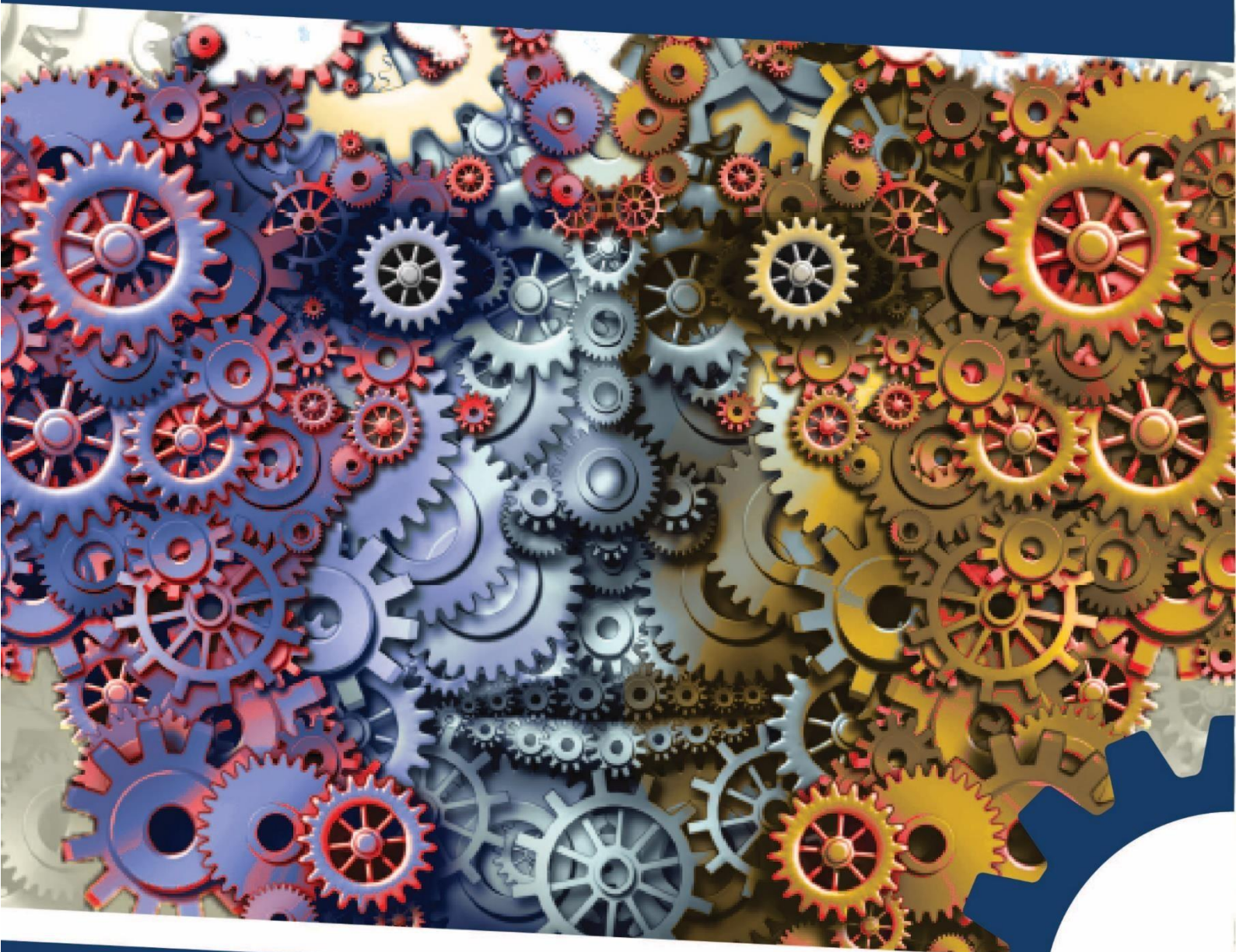
0843 289 2624
www.spierssafety.co.uk



CE Marking Machines | PUWER Inspections | Training

Certified PUWER Assessor - CPA[®]

Advanced Award Level 3 - PUWER Inspection



Share if you like it





What is it?

Spiers Engineering Safety are proud to offer the only qualification in PUWER Inspection and Machine Risk Assessment in the UK. It is also the only PUWER course which offers a practical element, allowing the learner to carry out an assessment on an industrial machine. This gives the learner a real feel for carrying out a PUWER inspection.

PUWER '98 applies to all work equipment, especially mobile and lifting equipment. It applies to all workplaces where the Health and Safety at Work Act 1974 (HSW Act) applies. All work equipment must have regular PUWER inspections carried out on them at set intervals.

This qualification is designed to develop and confirm advanced level inspection skills and knowledge for the learners who have responsibilities in the workplace for **PUWER inspection** of work equipment.

Using our unique **RiskMach** software, the learner will carry out the machine risk assessment on a tablet, enabling the data to be generated in a report format.

Who is it aimed at?





It is ideal for those with technical responsibilities in the workplace including technicians, team leaders, supervisors and Health and Safety practitioners.

The qualification is designed to assess the skills and understanding of the learner to inspect work equipment in accordance with PUWER 98, in a learning environment.




This **3 day course**, involves a mixture of classroom learning, theory assessment and carrying out a practical risk assessment on an industrial machine.



What are the learning outcomes?

-  Carry out inspections and report findings in accordance with PUWER '98 guidance (Provision and Use of Work Equipment Regulations)
-  Understand the requirements and implementation of PUWER '98
-  Understand the principles of risk assessment as a result of PUWER '98 inspections
-  Understand how to identify control measures using hierarchy of control and European standards

What are the benefits?

-  Carry out your own PUWER inspections. There's no need to source a machine safety consultancy to carry them out for you.
-  Have control over your own PUWER processes—set your own PUWER inspections at set intervals. Your managers, engineers, technicians, team leaders and H&S professionals will be able to ensure that statutory requirements for inspection are met and that the risks on work equipment are identified and controlled in line with best practice and the law.
-  Avoid accidents in the future by providing evidence of systematic risk assessment and risk reduction which (in the event of a claim following an accident) would drastically reduce your company's contributory negligence.

The important bits

Learners are required to have prior experience of conducting workplace inspections and risk assessments of industrial machines. Evidence of this will need to be given at point of registration. Should the learner not be able to demonstrate sufficient prior experience then the learner may continue on the course, but will not be able to sit the practical exam until suitable evidence is provided. (The exam must be sat within 6 months of the learner completing the course).

There are many ways of gaining relevant experience ;

- ✓ Attend a **PUWER Level 1 practical course at the Spiers Training Centre** (this is chargeable, prices on request). This 1 day course will focus on the practical skills of observation and inspection in the context of PUWER.
- ✓ Expert remote review of your PUWER inspections
- ✓ Complete Internal PUWER inspections
- ✓ Complete other workplace inspection and risk assessment activities.

